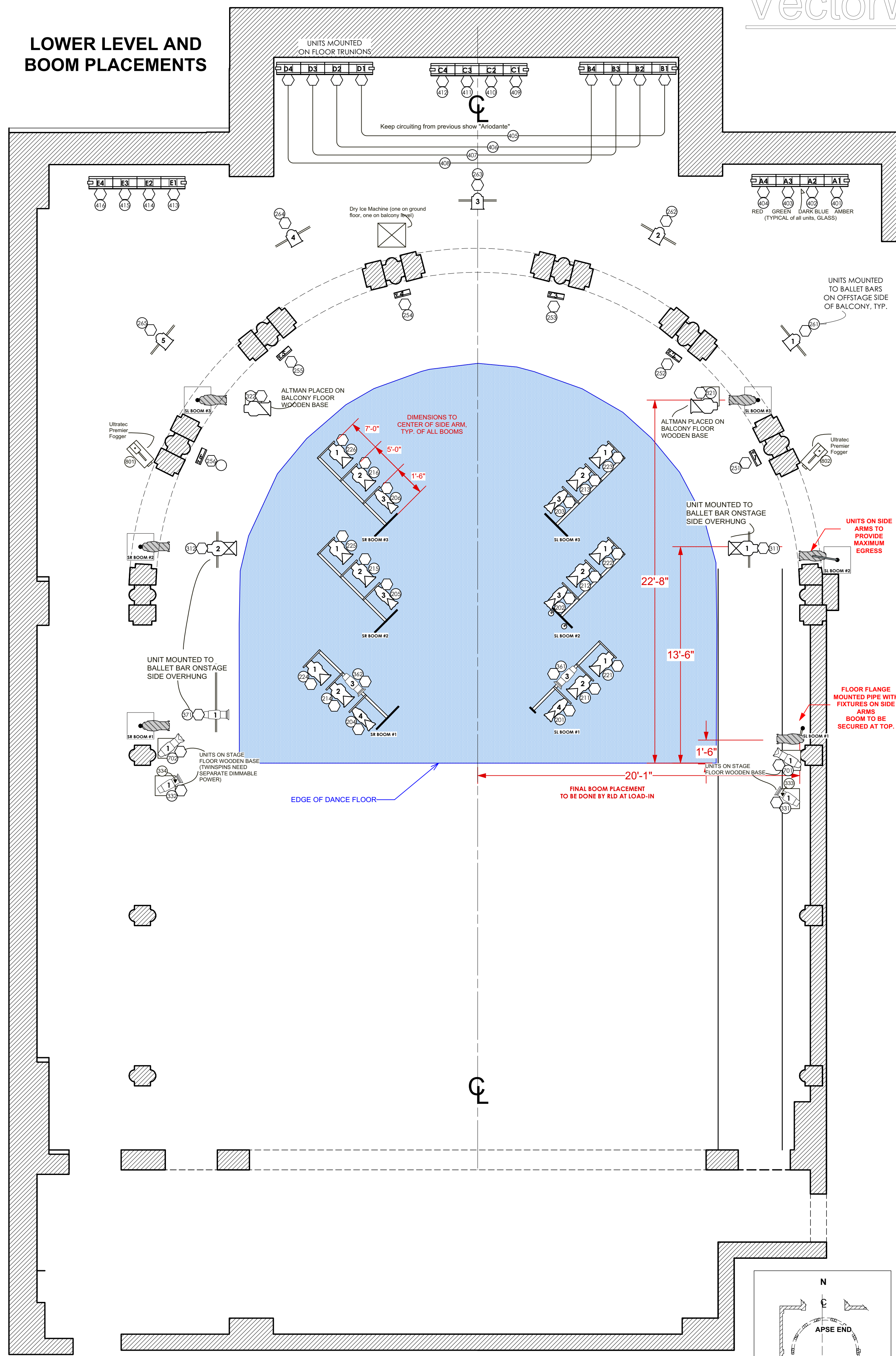
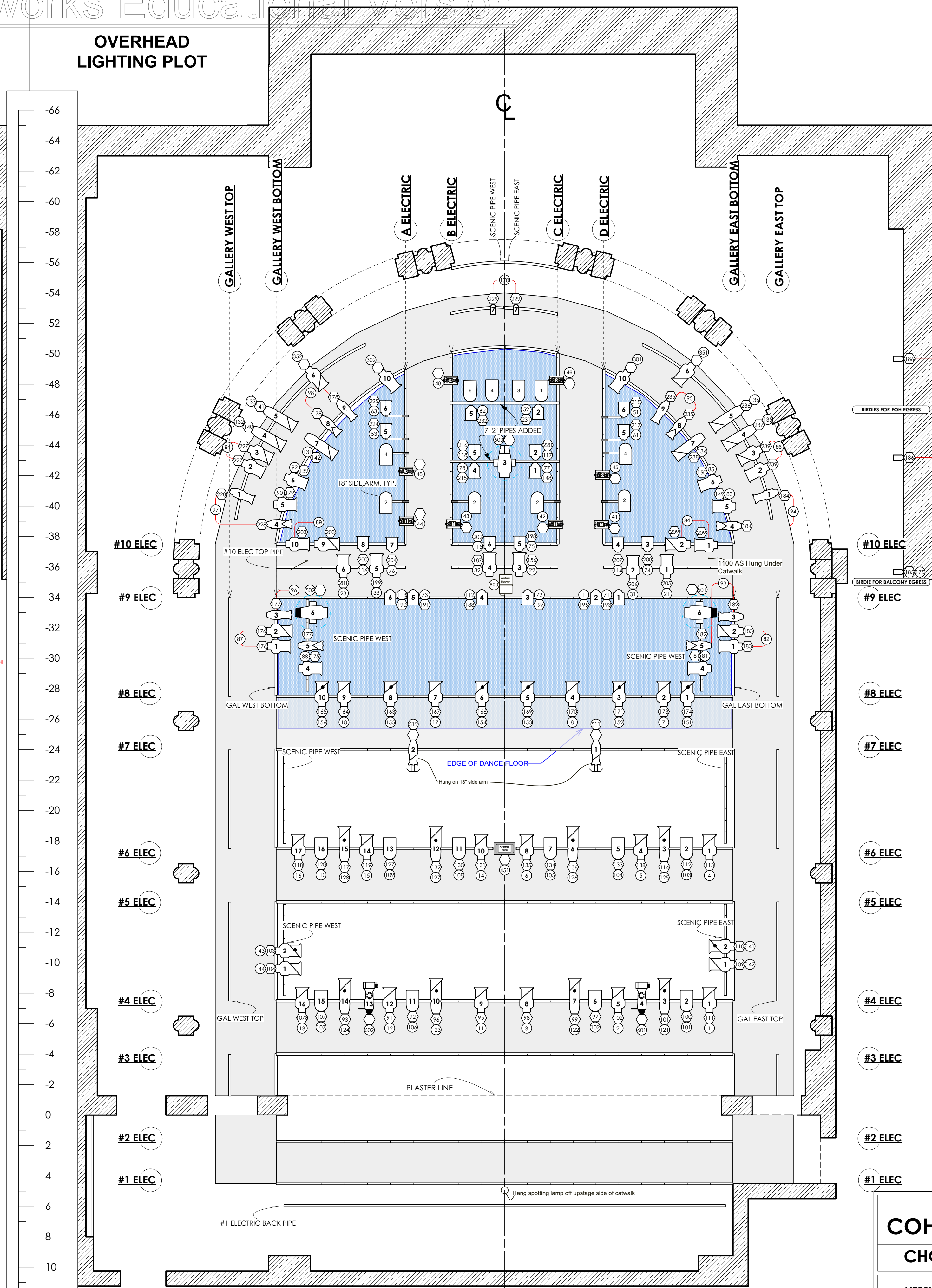


LOWER LEVEL AND BOOM PLACEMENTS



OVERHEAD LIGHTING PLOT



INSTRUMENT KEY

- 4.5x6.5 Allman, 750W EHG
- 6x9 Allman, 750W EHG
- 6x12 Allman, 750W EHG
- 6x16 Allman, 750W EHG
- 30° Colortran, 750W EHG
- 40° Colortran, 750W EHG
- 6" Fresnel Allman, 1kW BTR
- PAR 64 MFL, 1kW Q1000
- 50° ETC Source 4, 575W HPL
- 36° ETC Source 4, 575W HPL
- 70° ETC Source 4, 575W HPL
- 90° ETC Source 4, 575W HPL
- 4' 4-Circuit R40 Striplight, 12x 300W NSP
- Chauvet ColorDASH Batten
- Selador Vivid-R
- Martin Atomic 3000 Strobe
- 19" ETC Source 4, Boomerang, Iris, 750W HPL
- VL 1100 AS 575w MSR
- VL 1100 TS 1000W Tungsten Halogen

ACCESSORIES	TYPICAL
Rosco i-cue	R80 COLOR TEMPLATE UNIT NO. 23
Drop in Iris	25 DIMMER
Boomerang	44 CHANNEL
GAM Twispin	

THIS INVENTORY IS INTENDED TO BE AS IS PLEASE VERIFY CURRENT INVENTORY WITH RESIDENT MASTER ELECTRICIAN

HOUSE LIGHT DIMMERS

Position	Dimmer
3000 Pillar Sconce	241
4000 Pillar Sconce	243
3000 Foyer Entrance	244
4000 R/L Proscenium Entrance	245
4000 Apse Aisle Light	246
Apse House Light	247
Center House Light	248
Proscenium House Light	249
4000 Aisle East	250
3000 Proscenium, Entrance R/L	251
HR Under Balcony, Off Stage	252
HR Under Balcony, On Stage	253
Apse Stairs	254
HL Apse Under Balcony, Off Stage	255
HL Under Balcony, On Stage	256
4000 HR Balcony, Off Stage	257
4000 Apse Balcony, On Stage	258
4000 HR Balcony, On Stage	259
HR Apse Under Balcony, Off Stage	260
2000 Apse Under Stairs	261
Birdie for Balcony Egress	185
Birdies for FOH Egress	186

NOTES

1. ALL PIPES DRAWN ARE THE BOTTOM OF THE PAIR UNLESS NOTED.
2. ALL UNITS HANG ON BOTTOM PIPE UNLESS NOTED.
3. ALL YOKES HANG 90 DEGREES OUT FROM ELECTRIC TO FACILITATE FOCUS.
4. REF PLOT USES ALL SOFT FOCUS ON ELLIPSOIDS.
5. BLUE RUN LIGHTS INSTALLED PER SHOW MASTER ELECTRICIAN
6. **NOTE ON HOUSE LIGHTING** MANY OF THE HOUSELIGHTS ARE PROGRAMMED TO NEVER GO BELOW 1/2% BY THE UNIS ON ARCHITECTURAL SYSTEM. IF YOU NEED TO SHUT SOME OF THESE LIGHTS OFF FOR YOUR SHOW, A REQUEST MUST BE MADE TO THE RLD/RME A WEEK BEFORE LOAD-IN
7. EXACT BOOM POSITIONS TO BE DETERMINED AT LOAD IN
8. GAM TWISPINS NEED DIMMABLE POWER
9. EXACT FOGGER AND HAZER PLACEMENTS DETERMINED AT LOAD IN
10. SPOTTING LAMP TO BE HUNG BACK SIDE OF FURTHEST CATWALK.

DISCLAIMER: ALL ELEMENTS ARE THEORY ONLY UNTIL IMPLEMENTATION IN THE SPACE, THE LIGHTING DESIGNER DOES NOT CLAIM TO HAVE FULL KNOWLEDGE OF THEATRE. ELEMENTS SUBJECT TO CHANGE.

The University of Cincinnati College-Conservatory of Music
COHEN FAMILY STUDIO THEATER
CHOREOGRAPHERS' SHOWCASE 2018

VERSION 6
2/12/2018

RES. LIGHTING DESIGNER: NICHOLAS SMITH
 ASSOCIATE DESIGNERS: MICHAEL EKEMA-NARDELLA, JUSTIN DUDZIK, ZACH LIPO ZOVICH

ME: AUDREY MELKO
 DATE CREATED: 1/28/2018
 SCALE: 1/4" = 1'-0"
 DRAWN BY: NICHOLAS SMITH

PLATE:
1
 OF TWO