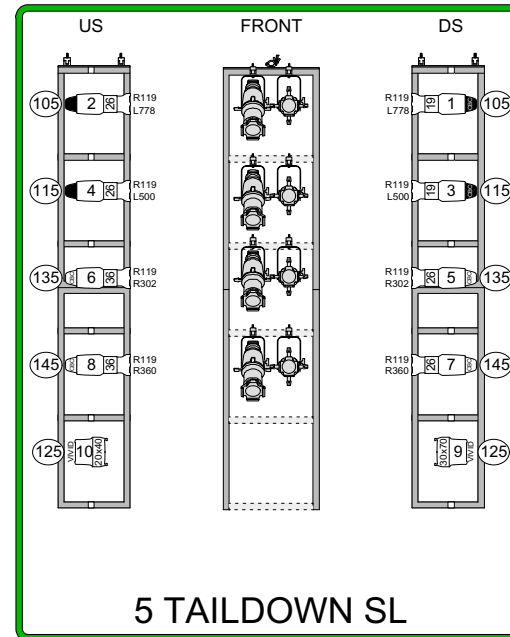
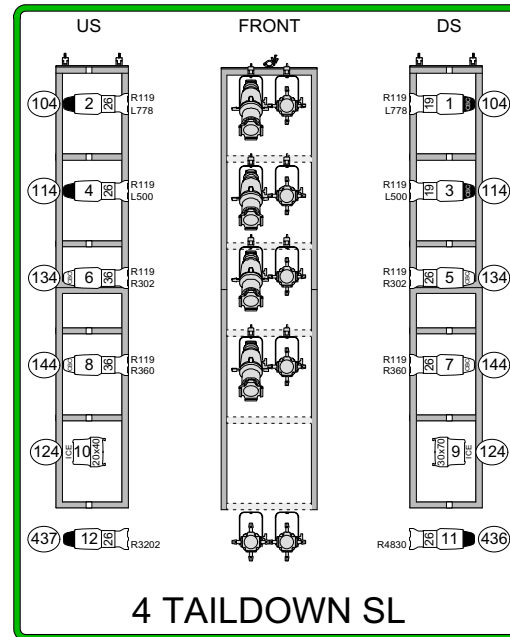
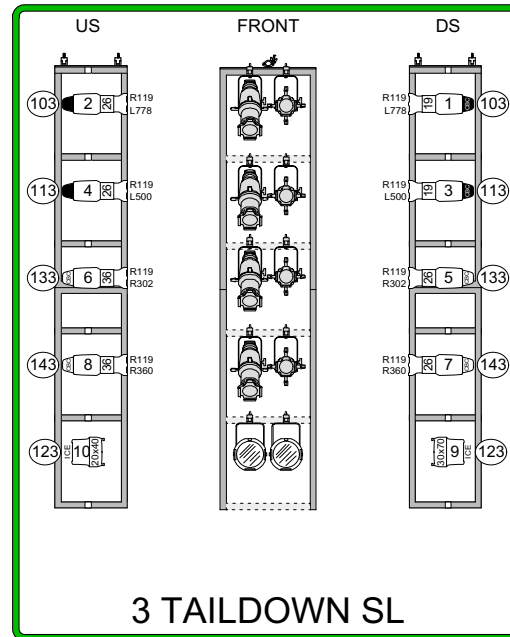
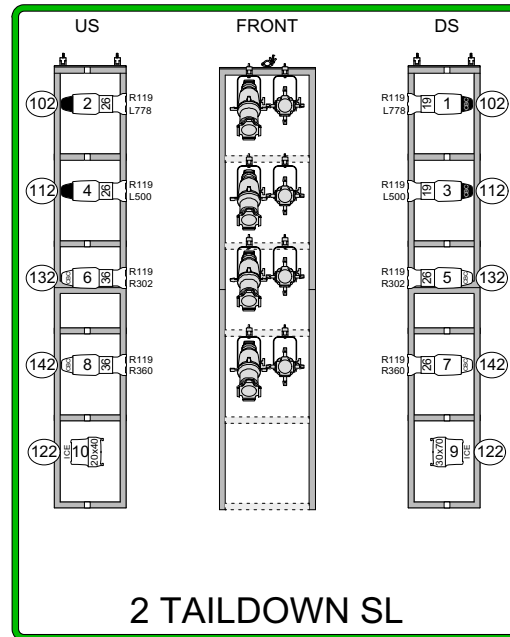
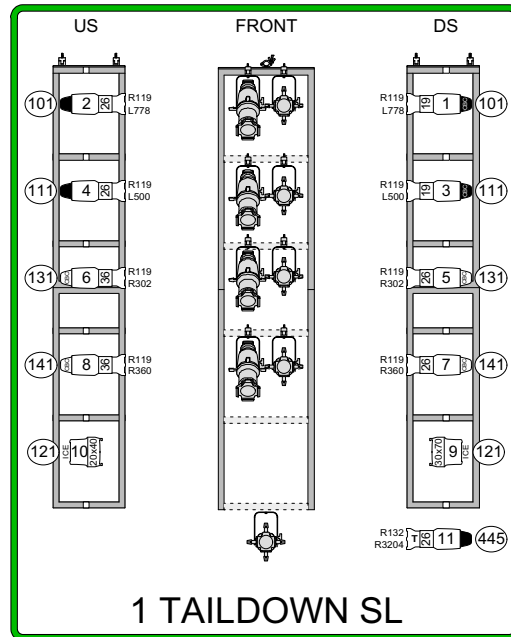
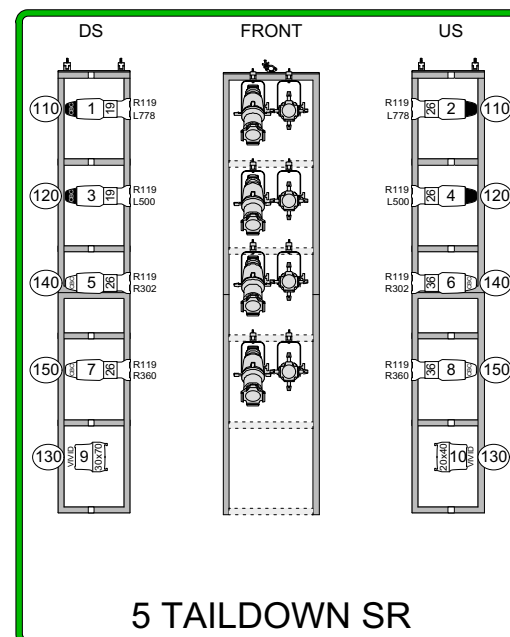
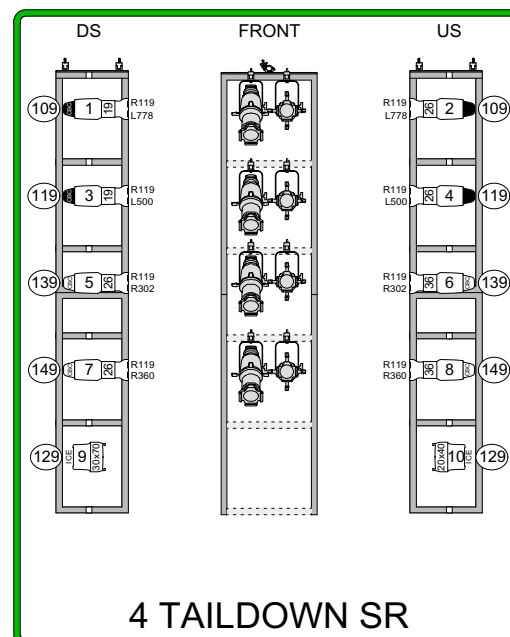
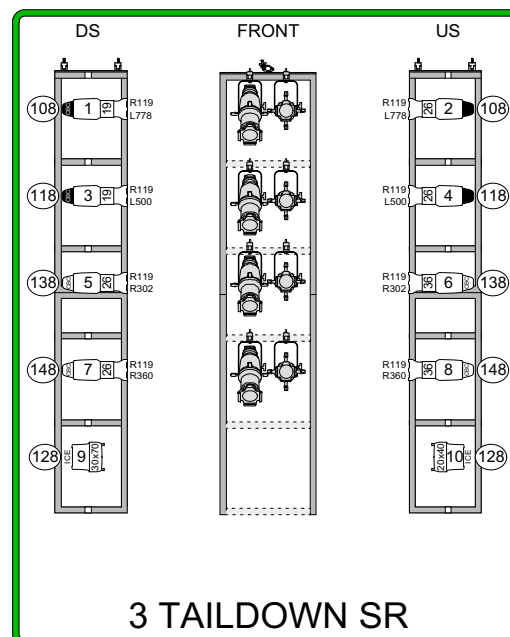
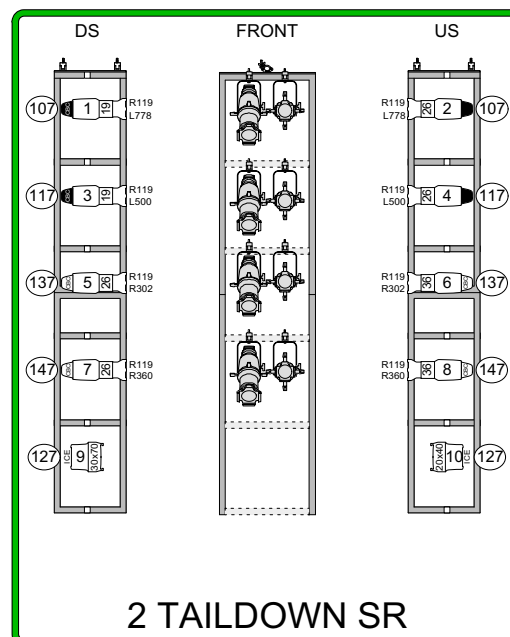
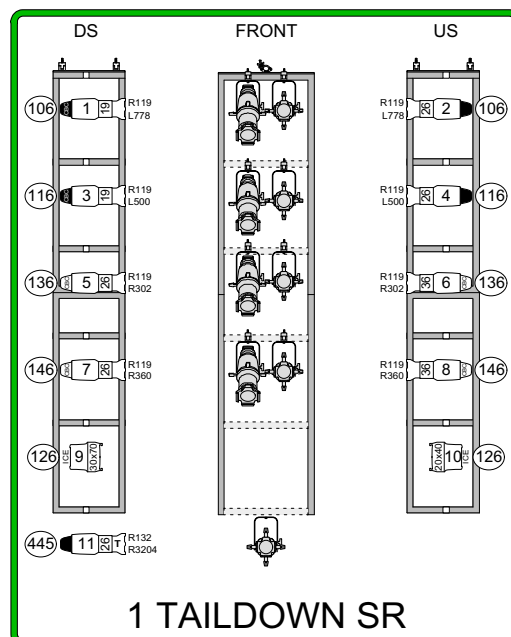


### TAILDOWNS STAGE LEFT



### TAILDOWNS STAGE RIGHT

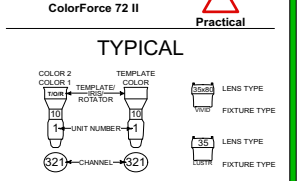


**THIS DRAWING PRESENTS DESIGN INTENT AND CONCEPTS.** ALL DESIGNS, INTENT AND CONCEPTS HEREBY FURNISHED BY 9 DESIGN GROUP ARE THE PROPERTY OF 9 DESIGN GROUP. THEY MAY BE USED FOR THIS PRODUCTION ONLY AND SHALL NOT BE REPRODUCED, RE-CREATED, NOR DISCLOSED TO OTHERS WITHOUT CONSENT. 9 DESIGN GROUP RESERVES THE RIGHT TO WITHDRAW THE USE OF THIS DESIGN FOR CURRENT AND FUTURE PRODUCTIONS. THE DESIGNERS AND ASSISTANT DESIGNERS ARE RESPONSIBLE ONLY FOR THE VISUAL ASPECTS OF THE PRODUCTION ONLY. IT IS UNDERSTOOD THAT ALL APPLICATIONS RELATE SOLELY TO THE APPEARANCE OF THE DESIGN AND NOT TO MATTERS OF SAFETY OR STRUCTURAL SUITABILITY. THE IMPLEMENTATION OF THIS DESIGN MUST COMPLY WITH THE MOST STRINGENT APPLICABLE FEDERAL AND LOCAL SAFETY AND FIRE CODES. THE DESIGNERS ARE NOT QUALIFIED TO DETERMINE ELECTRICAL OR STRUCTURAL APPROPRIATENESS OF THE DESIGN AND WILL NOT ASSUME RESPONSIBILITY FOR DAMAGES RESULTING FROM IMPROPER ENGINEERING AND/OR IMPLEMENTATION IN THE HANDLING OF THIS DESIGN. THE DESIGNERS AGREE TO MAKE ALTERATIONS TO ANY SPECIFICATION FOUND TO BE INCOMPATIBLE WITH PROPER SAFETY PRECAUTIONS.

#### KEY

- 5° ETC Source 4 750 watts
- 10° ETC Source 4 750 watts
- 14° ETC Source 4 750 watts
- 19° ETC Source 4 750 watts
- 26° ETC Source 4 750/575 watts
- 36° ETC Source 4 750/575 watts
- 50° ETC Source 4 750/575 watts
- 14° ETC Source 4 LED Series II - 140 watts
- 26° ETC Source 4 LED Series II - 140 watts
- 36° ETC Source 4 LED Series II - 140 watts
- MFL/NSP ETC Source 4 Par Medium/Narrow Lens - 750 watts
- ETC Selador D60 Lust+ 35° Med Round Lens - 161 watts
- ETC Selador D60 Vivid 35°x80° Oval Lens - 161 watts
- ETC Selador D60 Vivid 20°x40°/30°x70° Oval Lens - 161 watt
- ETC Selador D60 Ice 20°x40°/30°x70° Oval Lens - 161 watt
- Vari-Lite VL1100 Arc/Shutters

#### TYPICAL



**cincinnati BALLET**  
**ROMEO & JULIET**  
 Choreographed by Victoria Morgan  
 Lighting Design By Trad A Burns

SUBJECT  
**SIDE LIGHT**  
 DATE 28SEP17 SCALE 3/16"=1'-0"  
 DATE REVISION DRAWN BY

PLATE  
**3**  
 LX 372 LIGHTING DESIGNER  
 Trad A Burns

TRAD A BURNS DESIGNER  
 BENJAMIN GANTOSE DESIGNER  
 1443 West Clifton Blvd., Lakewood, OH 44107  
 C:216.849.4878 E: trad@point9group.com