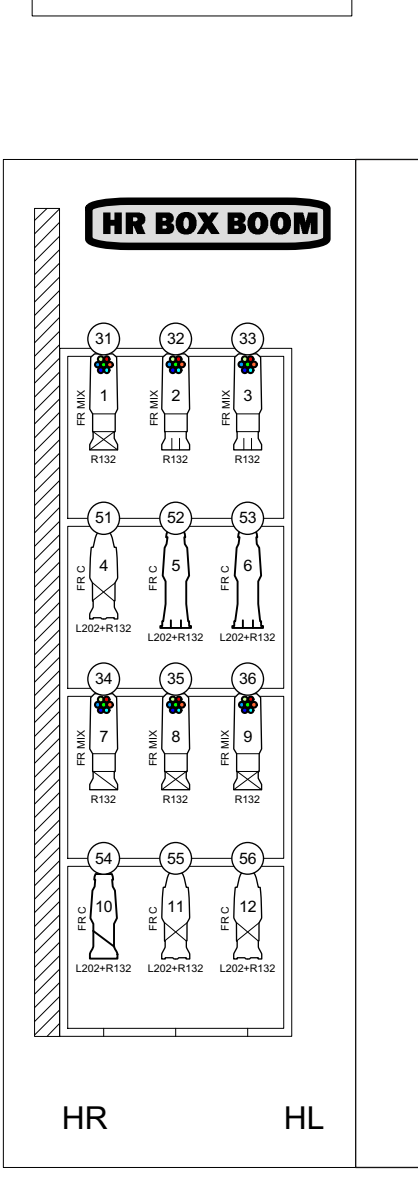
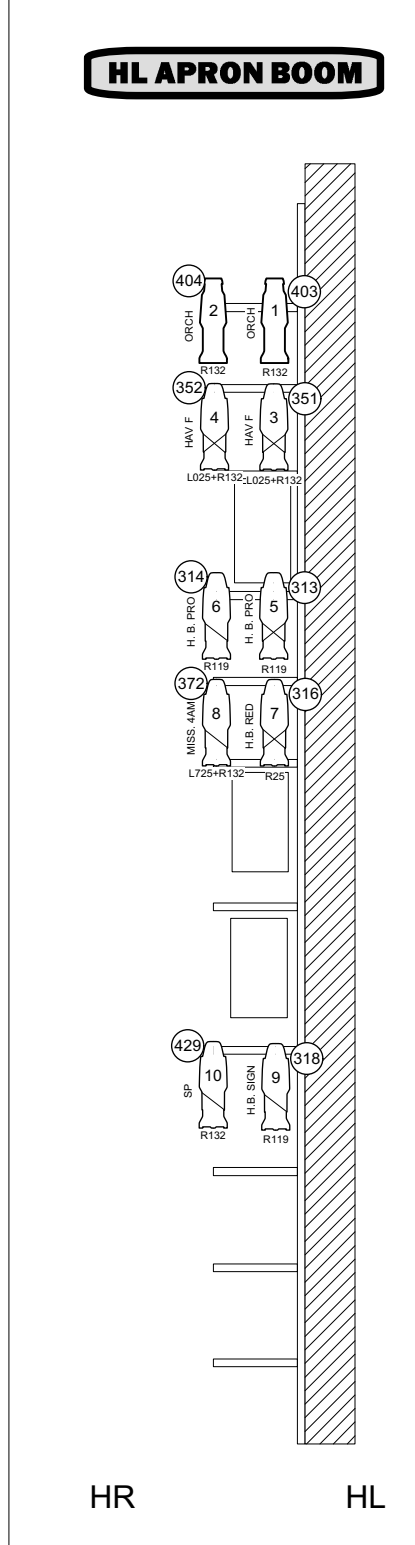
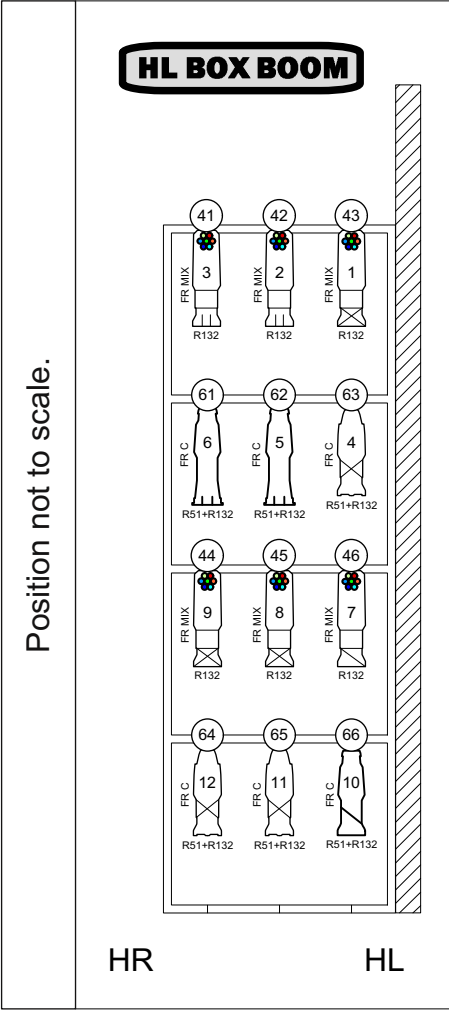
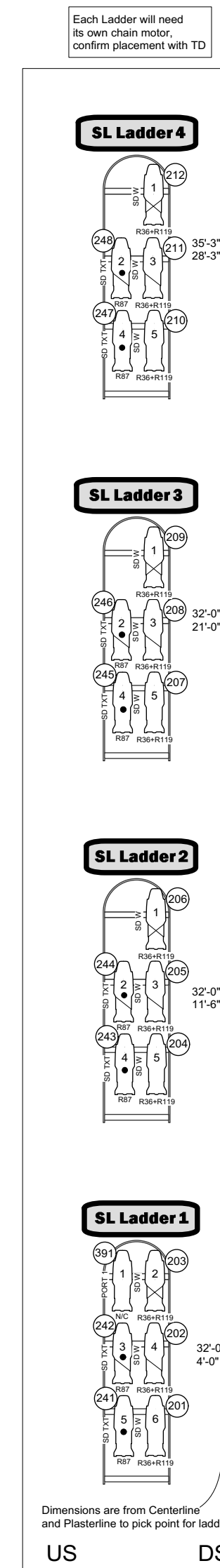
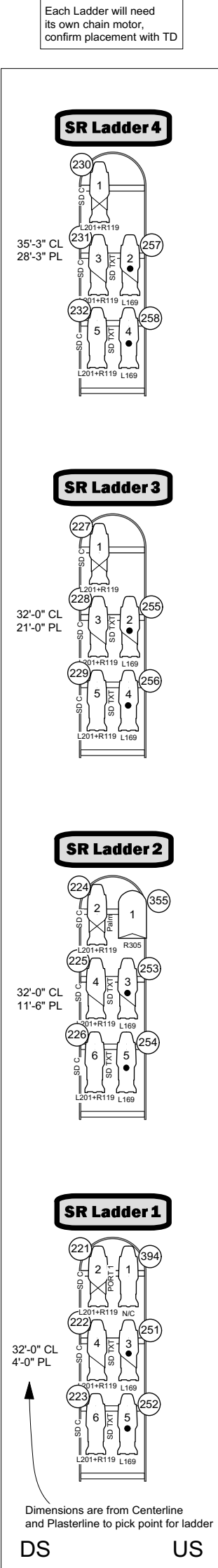
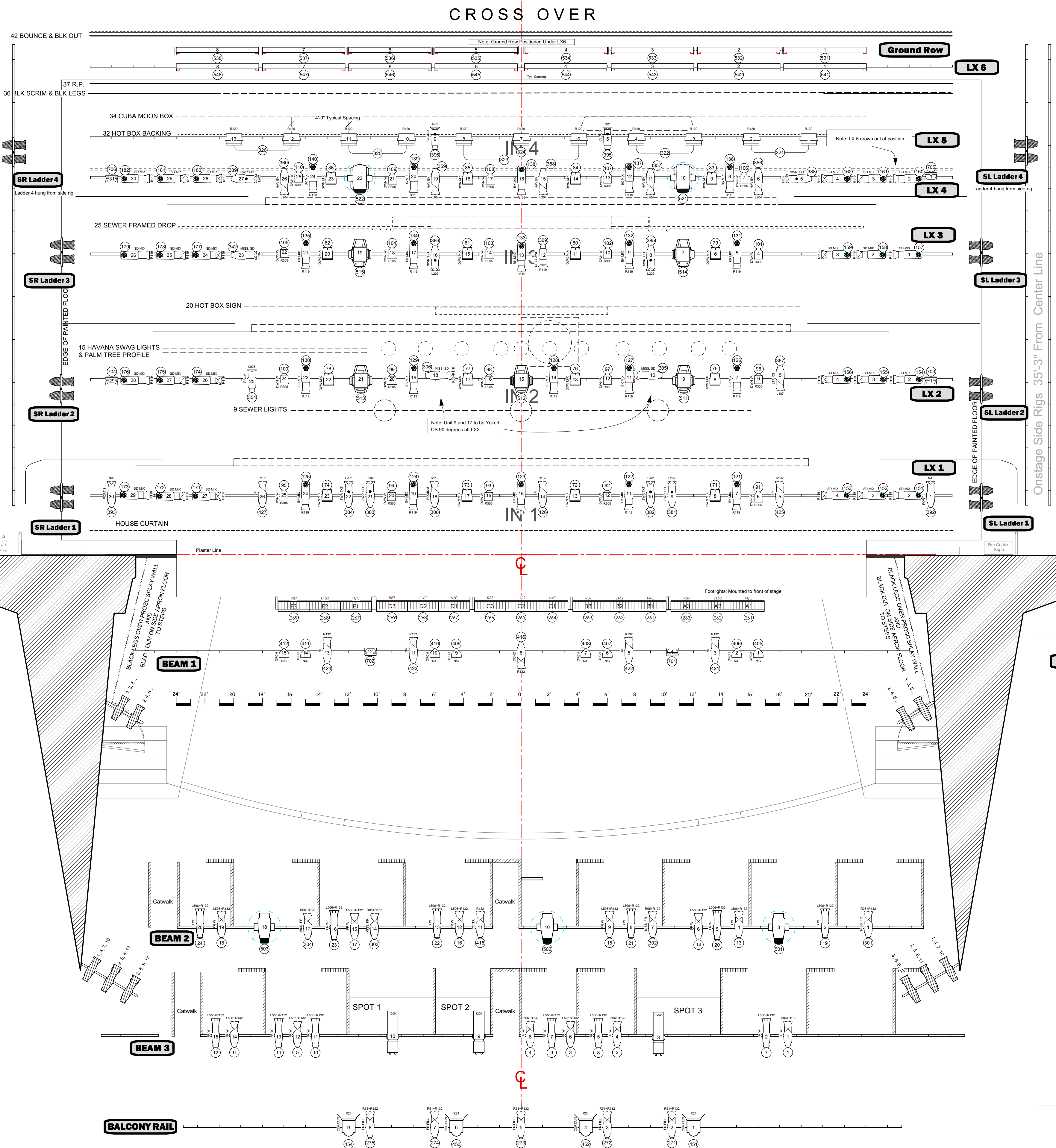


NOTES:

- 1) Provide Heat Shield for each 2k Fresnel on Balcony Rail.
- 2) Pre-focus all S4 Par lenses SL to SR.
- 3) All S4 Lustris should have internal diffusion in place.
- 4)

- 45 OPEN
 - 44 OPEN
 - 42 BLK OUT & BOUNCE
 - 41 OPEN
 - 40 OPEN
 - 39 LX 6
 - 38 OPEN
 - 37 R.P. SCREEN
 - 36 BLK SCRIM & BLK LEGS
 - 35 OPEN
 - 34 MOON BOX
 - 33 OPEN
 - 32 HOT BOX BACKING
- SHELL C**
- 31 LX 5
 - 30 LX 4
 - 29 OPEN
 - 28 BLK LEGS
 - 27 PORTAL 3
 - 26 OPEN
 - 25 SEWER WALL
 - 24 FOCUS TRACK
 - 23 OPEN
 - 22 LX 3
 - 21 OPEN
- SHELL B**
- 20 HOT BOX SIGN
 - 19 OPEN
 - 18 BLK LEGS
 - 17 PORTAL 2
 - 16 BLK BORDER
 - 15 HAVANA SWAG LIGHTS & PALM TREE
 - 14 FOCUS TRACK
 - 13 OPEN
 - 12 LX 2
 - 11 OPEN
 - 10 OPEN
 - 9 SEWER LIGHTS
 - 8 OPEN
- SHELL A**
- 7 OPEN
 - 6 PORTAL 1
 - 5 BLK BORDER
 - 4 OPEN
 - 3 LX 1
 - 2 OPEN
 - 1 OPEN
- VALENCE WITH GANGED BLACK BORDER
PLASTER LINE



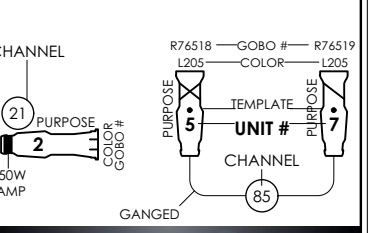
KEY TO INSTRUMENTATION

- 14 Degree ETC Source 4 - 575 W
- 19 Degree ETC Source 4 - 575 W
- 26 Degree ETC Source 4 - 575 W
- 36 Degree ETC Source 4 - 575 W
- 50 Degree ETC Source 4 - 575 W
- 90 Degree ETC Source 4 - 575 W
- 14 Degree ETC LUSTRE 2 141 W
- 19 Degree ETC LUSTRE 2 141 W
- 26 Degree ETC LUSTRE 2 141 W
- 36 Degree ETC LUSTRE 2 141 W
- 55 Degree ETC LUSTRE 2 141 W
- MFL PAR84 1 kw
- MFL Source 4 Par 575 W
- L&E Broad Cyc 10W
- 3" Fresnel 100 W
- 6" Fresnel 1KW
- 8" Fresnel 2 KW
- Arena Par Zoom
- Carlo 1200 MSR Followspot 1200 W
- Color Chorus 72
- MR 16 Mini Spot 12x MR 16 PAR
- VL1100 AS
- Solaframe 2000
- VL3000 Spot

ACCESSORIES

- Barndoor
- 18" Sidarm
- Top Hat
- Half Hat

TYPICAL



DESIGNER: Nicholas Smith
 ASSISTANT LD: Jeremy Mayo, Kelly Howard
 ME: Matt Barnett
 RLD: James Gage
 RME: Greg Falcone
 DATE: 10/3/18
 SCALE: 1/4" = 1'-0"
 DRAFTED BY: NBS
 REVISION: V8

Plan View

This plot serves as a representation of design elements. The Design team claims no knowledge of exact architectural dimensions/obstructions. The design team claims no responsibility for any damage/injury due to unsafe practices in implementing this design.