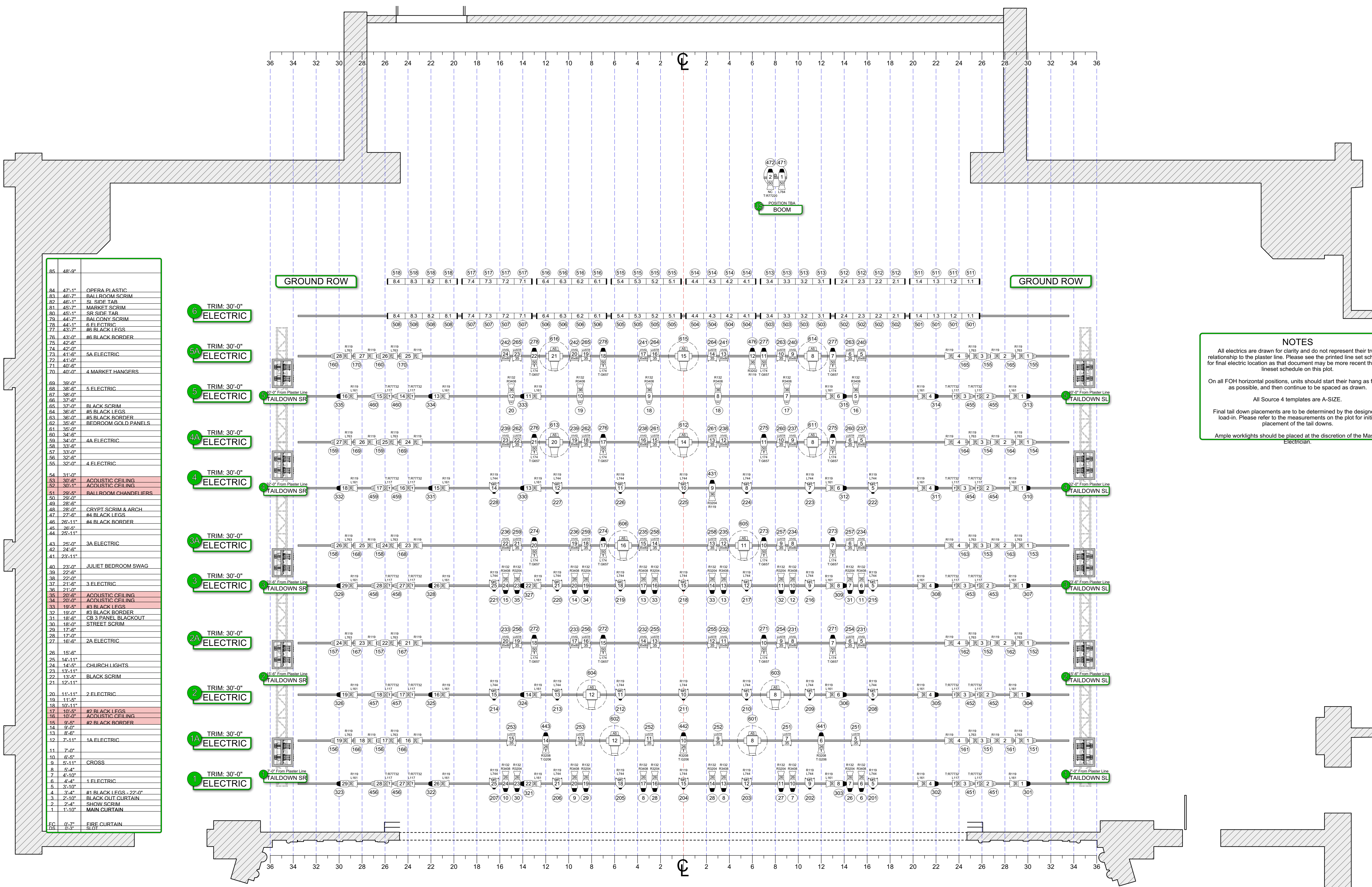




**THIS DRAWING REPRESENTS DESIGN INTENT AND CONCEPT.**  
 ALL DESIGNS, DRAWINGS, SPECIFICATIONS AND COPIES HEREBY FURNISHED BY DESIGN GROUP ARE THE PROPERTY OF DESIGN GROUP. THEY MAY BE USED FOR THIS PRODUCTION ONLY, AND SHALL NOT BE REPRODUCED, RE-CREATED, NOR DISCLOSED TO OTHERS WITHOUT CONSENT. DESIGN GROUP RESERVES THE RIGHT TO WITHDRAW THE USE OF THIS DESIGN FOR CURRENT AND FUTURE PRODUCTIONS. THE DESIGNERS AND ASSISTANT DESIGNERS ARE RESPONSIBLE ONLY FOR THE VISUAL ASPECTS OF THE PRODUCTION ONLY. IT IS UNDERSTOOD THAT ALL APPLICATIONS RELATE SOLELY TO THE APPEARANCE OF THE DESIGN AND NOT TO MATTERS OF SAFETY OR STRUCTURAL SUITABILITY. THE IMPLEMENTATION OF THIS DESIGN MUST COMPLY WITH THE MOST STRINGENT APPLICABLE FEDERAL AND LOCAL SAFETY AND FIRE CODES. THE DESIGNERS ARE NOT QUALIFIED TO DETERMINE ELECTRICAL OR STRUCTURAL APPROPRIATENESS OF THE DESIGN AND WILL NOT ASSUME RESPONSIBILITY FOR DAMAGES RESULTING FROM IMPROPER ENGINEERING AND/OR IMPLEMENTATION IN THE HANDLING OF THIS DESIGN. THE DESIGNERS AGREE TO MAKE ALTERATIONS TO ANY SPECIFICATION FOUND TO BE INCOMPATIBLE WITH PROPER SAFETY PRECAUTIONS.



85	48'-9"	
84	47'-1"	OPERA PLASTIC BALLROOM SCRIM
83	46'-7"	SI. SIDE TAB
82	46'-7"	MARKET SCRIM
81	45'-7"	SR. SIDE TAB
80	45'-1"	BALCONY SCRIM
79	44'-7"	#6 BLACK LEGS
78	43'-7"	#6 BLACK BORDER
77	42'-0"	5A ELECTRIC
76	41'-6"	4 MARKET HANGERS
75	41'-0"	
74	40'-0"	
73	39'-0"	5 ELECTRIC
72	38'-6"	
71	38'-0"	
70	37'-6"	BLACK SCRIM
69	37'-0"	#5 BLACK LEGS
68	36'-0"	#5 BLACK BORDER
67	35'-6"	BEDROOM GOLD PANELS
66	35'-0"	
65	34'-6"	4A ELECTRIC
64	34'-0"	
63	33'-0"	4 ELECTRIC
62	32'-6"	
61	32'-0"	
60	31'-0"	
59	30'-6"	ACOUSTIC CEILING
58	30'-1"	ACOUSTIC CEILING
57	29'-5"	BALLROOM CHANDELIERS
56	29'-0"	
55	28'-6"	CRYPT SCRIM & ARCH
54	27'-6"	#4 BLACK LEGS
53	26'-11"	#4 BLACK BORDER
52	25'-11"	
51	25'-0"	3A ELECTRIC
50	24'-6"	
49	24'-0"	JULIET BEDROOM SWAG
48	23'-6"	
47	22'-0"	3 ELECTRIC
46	21'-6"	
45	21'-0"	ACOUSTIC CEILING
44	20'-6"	ACOUSTIC CEILING
43	19'-5"	#3 BLACK LEGS
42	19'-0"	#3 BLACK BORDER
41	18'-0"	CS 3 PANEL BLACKOUT STREET SCRIM
40	17'-6"	
39	17'-0"	2A ELECTRIC
38	16'-6"	
37	15'-6"	
36	14'-11"	CHURCH LIGHTS
35	14'-5"	
34	13'-11"	BLACK SCRIM
33	13'-11"	
32	12'-11"	
31	11'-11"	2 ELECTRIC
30	11'-5"	
29	10'-11"	#2 BLACK LEGS
28	10'-0"	ACOUSTIC CEILING
27	9'-5"	#2 BLACK BORDER
26	9'-0"	
25	8'-6"	1A ELECTRIC
24	8'-0"	
23	7'-11"	
22	7'-0"	CROSS
21	6'-4"	
20	4'-10"	1 ELECTRIC
19	4'-4"	
18	3'-10"	
17	3'-4"	#1 BLACK LEGS - 22'-0"
16	2'-10"	BLACK OUT CURTAIN
15	2'-4"	SHOW SCRIM
14	1'-10"	MAIN CURTAIN
13	0'-7"	FIRE CURTAIN
12	0'-3"	SLOT

**KEY**

- 5" ETC Source 4 750 watts
- 10" ETC Source 4 750 watts
- 14" ETC Source 4 750 watts
- 19" ETC Source 4 750 watts
- 26" ETC Source 4 750/575 watts
- 36" ETC Source 4 750/575 watts
- 50" ETC Source 4 750/575 watts
- 14" ETC Source 4 LED Series II - 140 watts
- 26" ETC Source 4 LED Series II - 140 watts
- 36" ETC Source 4 LED Series II - 140 watts
- MFL/NSP ETC Source 4 Par Medium/Narrow Lens - 750 watts
- ETC Selador D60 Lustr+ 35" Med Round Lens - 161 watts
- ETC Selador D60 Vivid 35" Med Round Lens - 161 watts
- ETC Selador D60 Vivid 20"x40"/30"x70" Oval Lens - 161 watt
- ETC Selador D60 Ice 20"x40"/30"x70" Oval Lens - 161 watt
- Vari'Lite VL1100 Arc/Shutters

**NOTES**

All electrics are drawn for clarity and do not represent their true relationship to the plaster line. Please see the printed line set schedule for final electric location as that document may be more recent than the lineset schedule on this plot.

On all FOH horizontal positions, units should start their hang as far DS as possible, and then continue to be spaced as drawn.

All Source 4 templates are A-SIZE.

Final tail down placements are to be determined by the designer at load-in. Please refer to the measurements on the plot for initial placement of the tail downs.

Ample worklights should be placed at the discretion of the Master Electrician.

**KEY**

- ColorForce 72 II

**TYPICAL**

COLOR 2 COLOR 1 TEMPLATE COLOR LENS TYPE  
 1-UNIT NUMBER-1 35" LENS TYPE  
 321-CHANNEL-321 35" LENS TYPE

**ColorForce 72 II**

**Practical**

**TYPICAL**

COLOR 2 COLOR 1 TEMPLATE COLOR LENS TYPE  
 1-UNIT NUMBER-1 35" LENS TYPE  
 321-CHANNEL-321 35" LENS TYPE

**cincinnati BALLET**  
**ROMEO & JULIET**  
 Choreographed by Victoria Morgan  
 Lighting Design By Trad A Burns

**SUBJECT LIGHT PLOT**

DATE: 28SEP17 SCALE: 1/4"=1'-0"  
 REVISION: DRWN BY:

**PLATE 1**

LX 372 LIGHTING DESIGNER

TRAD A BURNS DESIGNER  
 BENJAMIN GANTOSE DESIGNER  
 1443 West Clifton Blvd., Lakewood, OH 44107  
 C: 216.849.4878 E: trad@point9group.com